



**Government of India
Ministry of Earth Sciences
India Meteorological Department**



Press Release

Date: 22nd July, 2025

Time of Issue: 1300 hours IST

**Subject: i) Heavy to very heavy rainfall likely over Kerala, Karnataka, Coastal Andhra Pradesh, Telangana, Konkan & Goa, Madhya Maharashtra, Madhya Pradesh, Vidarbha & Chhattisgarh during next 6-7 days with isolated extremely heavy falls over Telangana on 22nd July.
ii) Heavy to very heavy rainfall likely over eastern & central parts of the country (Gangetic West Bengal, Odisha, Jharkhand) during 24th -27th July.**

Realised weather during past 24 hours till 0830 hours IST of today, the 22nd July, 2025:

- ❖ **Heavy to very heavy rainfall (7-20 cm)** has been recorded at isolated places over Marathawada, Gujarat State, Chhattisgarh; **Heavy rainfall (7-11 cm)** at isolated places over Jammu-Kashmir, Himachal Pradesh, Uttarakhand, Punjab, Haryana, Delhi, West Uttar Pradesh, Konkan, goa, Madhya Maharashtra, Sub-Himalayan West Bengal, Odisha, Bihar, Assam, Tripura, Vidarbha, North Interior Karnataka, Coastal Andhra Pradesh and Telangana.

For more details of realised weather, kindly refer [Annexure I](#).

i. Weather Systems, Forecast and Warnings (refer to [Annexure II & III](#)):

- ❖ The monsoon trough runs to near its normal position at mean sea level.
- ❖ An **upper air cyclonic circulation** lies over north Coastal Andhra Pradesh & neighbourhood in lower & middle tropospheric levels tilting southeastwards with height.
- ❖ An east-west trough runs from North Interior Karnataka to central parts of Coastal Andhra Pradesh roughly along Lat. 15°N in middle tropospheric levels.
- ❖ An upper air cyclonic circulation over south Chhattisgarh and another over northeast Jharkhand & neighbourhood in lower tropospheric levels.
- ❖ A trough runs roughly along Long. 94°E to the north of Lat. 24°N in lower tropospheric levels.
- ❖ A cyclonic circulation (Remnant of Tropical Cyclone Wipha) is likely to emerge over north Bay of Bengal during next 24 hours. Under its influence, a Low Pressure area is likely to form over the same region in the subsequent 48 hours.

Under the influence of these systems, the following weather is likely:

South Peninsular India:

- ✓ **Extremely heavy falls** very likely at isolated places over Telangana today.
- ✓ Isolated **heavy rainfall** likely over Kerala & Mahe, Karnataka, Tamil Nadu during 22nd-28th; Coastal Andhra Pradesh & Yanam, Telangana during 22nd-26th July with isolated **very heavy rainfall** over Coastal Karnataka on 22nd; Telangana on 23rd and Kerala during 25th-27th July.
- ✓ **Strong surface winds** (speed reaching 40-50 kmph) very likely over South Peninsular India during next 5 days.
- ✓ Light/moderate rainfall at most/many places over Kerala & Mahe, Lakshadweep, Karnataka, Rayalaseema, Coastal Andhra Pradesh & Yanam & Telangana during next 7 days.

West India:

- ✓ **Heavy to very heavy rainfall** likely at isolated places over Konkan & Goa, Ghat areas of Madhya Maharashtra during 22nd-28th July and **heavy rainfall** over Marathawada on 22nd & 26th; Gujarat State on 22nd & during 26th-28th July.
- ✓ Light/moderate rainfall at many/some places very likely over the region during next 5 days.

East & Central India:

- ✓ Isolated **heavy rainfall** very likely to continue over Madhya Pradesh, Vidarbha, Chhattisgarh, Odisha, Sub-Himalayan West Bengal & Sikkim during 22nd-28th; Gangetic West Bengal, Bihar, Jharkhand during 24th-28th July with isolated **very heavy rainfall over West Madhya Pradesh during 26th-28th; East Madhya Pradesh during 25th-28th; Vidarbha, Chhattisgarh during 22nd-26th; Jharkhand, Gangetic West Bengal & Odisha on 24th & 25th July.**

- ✓ Light/moderate rainfall at most/many places accompanied with thunderstorm, lightning & gusty winds (speed reaching 30-40 Kmph) likely over the region during next 7 days with **moderate lightning over Bihar on 24th & 25th July**.

Northwest India:

- ✓ Isolated **heavy rainfall** likely over Jammu and Kashmir during 22nd-24th; Himachal Pradesh on 22nd & during 26th-28th; Uttarakhand during 22nd-28th; Punjab, Haryana on 22nd, 23rd, 27th & 28th; Uttar Pradesh during 25th-28th; West Rajasthan on 27th & 28th and East Rajasthan on 23rd and during 26th-28th July with **very heavy rainfall over Jammu-Kashmir on 22nd & 23rd July**.
- ✓ Light/moderate rainfall at most/many places accompanied with thunderstorm, lightning likely over Western Himalayan region and some places over the plains during next 7 days.

Northeast India:

- ✓ Light/moderate rainfall at many/some places accompanied with **thunderstorm, lightning** likely to continue over Northeast India during next 7 days.
- ✓ Isolated **heavy rainfall** very likely over Arunachal Pradesh, Assam & Meghalaya, Nagaland & Tripura during 22nd -28th July with very heavy rainfall over Meghalaya on 23rd July.

Fishermen Warnings:

Fishermen are advised to avoid venturing into the following from 22nd July to 27th July 2025 to the following Areas:

- ✓ **Arabian Sea:** Along and off Gujarat coast and adjoining sea area during 23rd to 27th July; along and off Konkan & Goa, Kerala, Karnataka coasts, over Lakshadweep, Maldives, Comorin areas; along and off the Somalia coast and adjoining sea areas, south Oman and adjoining Yemen coast & adjoining sea areas; most parts of central Arabian Sea and adjoining, northern parts of south Arabian Sea for 22nd to 27th July.
- ✓ **Bay of Bengal:** Along and off Tamil Nadu, Andhra Pradesh coasts; Gulf of Mannar, Andaman Sea for 22nd to 27th July; Odisha, Gangetic West Bengal coasts, entire north Bay of Bengal for 24th July to 27th July; South and Central Bay of Bengal for 22nd to 24th July.

ii. Weather conditions and forecast over Delhi/NCR during 22nd to 25th July, 2025 (Annexure IV)

For more details, kindly refer National Weather Bulletin:

https://mausam.imd.gov.in/responsive/all_india_forecast_bulletin.php

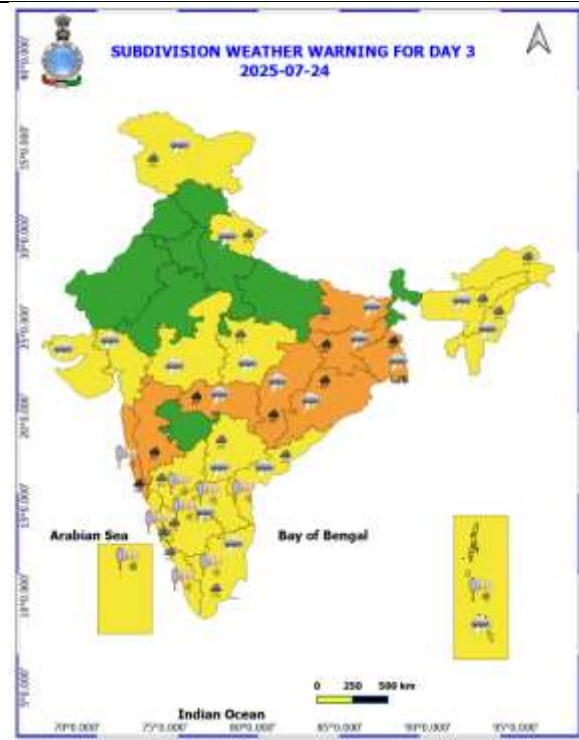
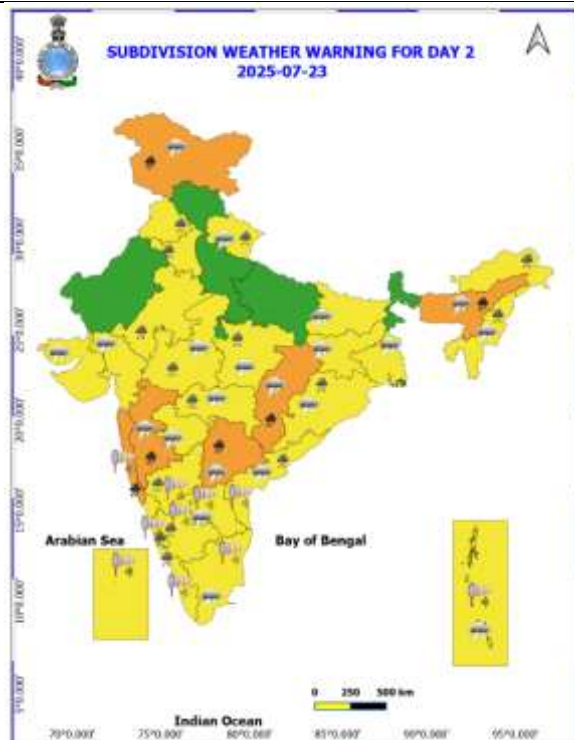
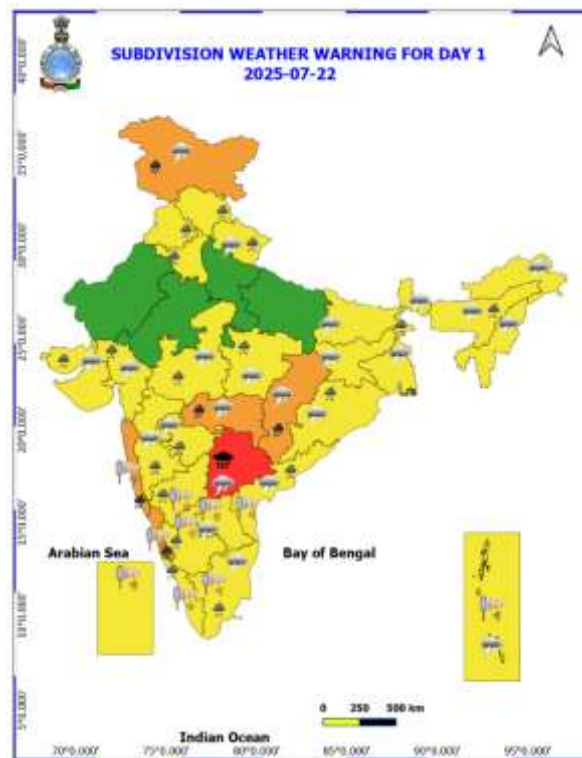
For District wise warnings refer: <https://mausam.imd.gov.in/responsive/districtWiseWarningGIS.php>

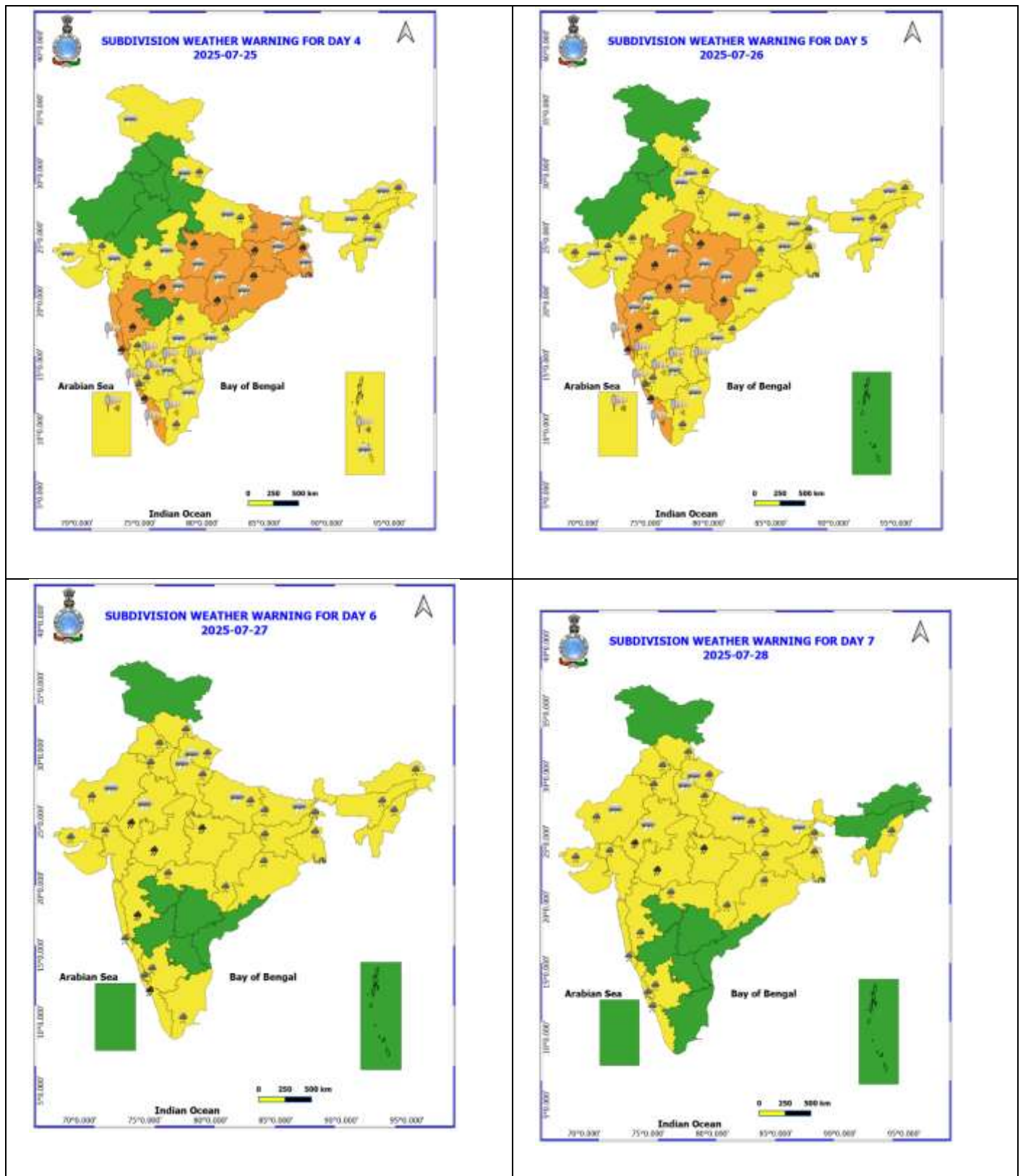
Rainfall recorded (in cm) during past 24 hours till 0830 hours IST of today, the 22nd July:

- ❖ **Marathwada:** Sonpeth (dist Parbhani) 17; Pathri (dist Parbhani) 12; Ardhapur (dist Nanded) 9; Bhum (dist Dharashiv) 8; Shirur Anantpal (dist Latur) 7;
- ❖ **Chhattisgarh:** Bhanpuri (dist Bastar) 12;
- ❖ **Gujarat Region:** Kapadvanj (dist Kheda) 12; Navasari AWS (dist Navsari) 9; Navsari (dist Navsari), Jalalpor (dist Navsari), Talod (dist Sabarkantha) 7 Each;
- ❖ **Konkan & Goa:** Santacruz (dist Mumbai Suburban), Murud (dist Raigad), Wada (dist Palghar) 11 Each; Kudal (dist Sindhudurg), Sawantwadi (dist Sindhudurg), Mapusa (dist North Goa) 10 Each; Alibag - IMD Part Time (dist Raigad), Savarde-arg (dist Ratnagiri) 9 Each; Sanguem (dist South Goa), Mhasla (dist Raigad) 8 Each; Guhagarh (dist Ratnagiri), Pernem (dist North Goa), Rajapur (dist Ratnagiri), Panjim (dist North Goa) 7 Each;
- ❖ **Jammu-Kashmir:** Katra (dist Reasi) 10; Rajouri (dist Rajouri) 9; Reasi ARG (dist Reasi) 8;
- ❖ **Punjab:** Salern AWS (dist Hoshiarpur) 10; Pau Ludhiana (dist Ludhiana) 7; **Odisha:** Malkangiri (dist Malkangiri) 10; Komna (dist Nawapara) 9; Kotpad (dist Koraput) 8; Kosagumda (dist Nawarangpur) 7;
- ❖ **Telangana:** Tandur (dist Vikarabad) 10; Kodangal(ARG) (dist Vikarabad), Eturnagaram (dist Mulugu), Nidamanur (dist Nalgonda), Bala Nagar (dist Mahabubnagar) 8 Each; Doma (dist Vikarabad), Gudurwrgl (dist Mahabubabad), Mulakalapalle (dist B. Kothagudem), Kodangal (dist Vikarabad), Sathupalle (dist Khammam), Nallabelly (dist Warangal), Enkuru (dist Khammam) 7 Each;
- ❖ **Vidarbha:** Mehkar (dist Buldhana) 9,
- ❖ **West Uttar Pradesh:** Etah (dist Etah) 9;
- ❖ **Himachal Pradesh:** Amb (dist Una) 9; Bharari (dist Hamirpur) 7;
- ❖ **Coastal Andhra Pradesh & Yanam:** Macherla (dist Palnadu) 8; Guntur (dist Guntur) 7;
- ❖ **North Interior Karnataka:** Sedam (dist Kalaburgi) 8; Shahpur (dist Yadgir) 7;
- ❖ **Madhya Maharashtra:** Igatpuri (dist Nashik) 8;
- ❖ **Saurashtra & Kutch:** Talaja (dist Bhavnagar) 8;
- ❖ **Haryana, Delhi:** Green Field Ps (dist North East Delhi) 8; Tajewala (dist Yamuna Nagar) 7;
- ❖ **East Uttar Pradesh:** Gonda CWC (dist Gonda) 8;
- ❖ **Bihar:** Bikram (dist Patna) 8;
- ❖ **Sub Himalayan West Bengal:** Jiti T.e. (dist Jalpaiguri) 8;
- ❖ **Assam:** Goibargaon (dist Baksa), Hangrabari ARG (dist Kamrup Metropolitan) 8 Each.

Table-1								
7 Days Rainfall Forecast								
S.No.	Subdivision	22- Jul	23- Jul	24- Jul	25- Jul	26- Jul	27- Jul	28- Jul
		Day 1	Day 2	Day 3	Day 4	Day 5	Day 6	Day 7
1	ANDAMAN & NICOBAR ISLANDS	WS	WS	FWS	FWS	FWS	FWS	FWS
2	ARUNACHAL PRADESH	SCT	SCT	SCT	FWS	FWS	FWS	FWS
3	ASSAM & MEHGHALAYA	FWS	FWS	FWS	WS	WS	WS	FWS
4	NAGALAND, MANIPUR, MIZORAM AND TRIPURA	FWS	FWS	WS	WS	WS	FWS	FWS
5	SUB HIMALAYAN WEST BENGAL & SIKKIM	FWS	FWS	FWS	FWS	FWS	FWS	FWS
6	GANGETIC WEST BENGAL	SCT	FWS	WS	WS	WS	WS	WS
7	ODISHA	SCT	FWS	WS	WS	WS	WS	FWS
8	JHARKHAND	SCT	FWS	WS	WS	WS	WS	FWS
9	BIHAR	ISOL	ISOL	SCT	FWS	FWS	SCT	SCT
10	EAST UTTAR PRADESH	ISOL	ISOL	FWS	FWS	SCT	FWS	SCT
11	WEST UTTAR PRADESH	ISOL	ISOL	ISOL	FWS	FWS	FWS	FWS
12	UTTARAKHAND	FWS	FWS	FWS	FWS	FWS	FWS	FWS
13	HARYANA, CHANDIGARH & DELHI	FWS	FWS	SCT	ISOL	SCT	FWS	FWS
14	PUNJAB	FWS	FWS	SCT	ISOL	SCT	SCT	FWS
15	HIMACHAL PRADESH	FWS	FWS	SCT	SCT	FWS	FWS	FWS
16	JAMMU AND KASHMIR AND LADAKH	WS	WS	WS	SCT	SCT	SCT	ISOL
17	WEST RAJASTHAN	ISOL	ISOL	ISOL	ISOL	ISOL	ISOL	SCT
18	EAST RAJASTHAN	SCT	SCT	ISOL	ISOL	SCT	FWS	FWS
19	WEST MADHYA PRADESH	FWS	WS	WS	WS	WS	WS	WS
20	EAST MADHYA PRADESH	FWS	FWS	WS	WS	WS	WS	WS
21	GUJRAT REGION	FWS	SCT	SCT	FWS	FWS	WS	WS
22	SAURASHTRA & KUTCH	SCT	SCT	SCT	SCT	FWS	WS	WS
23	KONKAN & GOA	WS	WS	WS	WS	WS	WS	WS
24	MADHYA MAHARASHTRA	FWS	FWS	FWS	FWS	FWS	FWS	SCT
25	MARATHWADA	FWS	SCT	ISOL	SCT	SCT	ISOL	ISOL
26	VIDARBHA	FWS	WS	WS	WS	WS	WS	FWS
27	CHHATTISGARH	WS	WS	WS	WS	WS	WS	FWS
28	COASTAL ANDHRA PRADESH	WS	WS	FWS	FWS	FWS	FWS	SCT
29	TELANGANA	WS	WS	WS	FWS	FWS	SCT	SCT
30	RAYALASEEMA	FWS	FWS	FWS	SCT	SCT	SCT	ISOL
31	TAMILNADU & PUDUCHERRY	ISOL	ISOL	ISOL	ISOL	ISOL	ISOL	ISOL
32	COSTAL KARNATAKA	WS	WS	WS	WS	WS	WS	WS
33	NORTH INTERIOR KARNATAKA	WS	WS	WS	FWS	FWS	FWS	SCT
34	SOUTH INTERIOR KARNATAKA	WS	WS	WS	WS	FWS	FWS	SCT
35	KERALA AND MAHE	WS	WS	WS	WS	WS	WS	WS
36	LAKSHADWEEP	WS	WS	WS	WS	WS	WS	WS

- As the lead period increases forecast accuracy decrease.





- Action may be taken based on ORANGE AND REDCOLOUR warnings.
- Vulnerable regions likely urban and hilly areas action may be initiated for heavy rainfall warning.
- As the lead period increases forecast accuracy decreases.

Detailed districtwise Multi Hazard weather warning for next five days available at <https://mausam.imd.gov.in/responsive/districtWiseWarningGIS.php>

Weather forecast over Delhi/NCR during 22th to 25th July 2025

Past Weather:

There has been fall in the minimum temperature up to 1 - 2°C and fall in maximum temperature up to 1 - 2°C over Delhi/NCR during the past 24 hours. The maximum and minimum temperatures over Delhi were around 32 to 33°C and 24 to 27°C respectively. The minimum temperature was below normal up to 1 to 2°C and the maximum temperature was below normal up to 1 to 2°C. Partly cloudy sky conditions with predominant surface wind from the southeast direction with wind speeds up to 16 kmph prevailed during the past 24 hours. Very light to light rainfall has been recorded in most places with isolated places of heavy rainfall over Delhi. Generally cloudy sky conditions with a windspeed of less than 12 kmph from the southeast direction prevailed over the region in the forenoon today.

Weather Forecast:

22.07.2025: Generally cloudy sky. Light to moderate rain accompanied with thunderstorms/lightning. The maximum temperatures over Delhi are likely to be in the range of 31 to 33°C. The maximum temperature will be below normal up to 1 to 2°C. The predominant surface wind will likely be from the southwest direction with a wind speed of less than 05-10 kmph in the afternoon. The wind speed will remain 05-10 kmph from the southwest direction during evening and night.

23.07.2025: Generally cloudy sky. Light to moderate rain accompanied with thunderstorms/lightning. The maximum and minimum temperatures over Delhi are likely to be in the range of 31 to 33°C and 24 to 26°C respectively. The minimum temperature will be below normal up to 1 to 2°C and the maximum temperature will be below normal up to 1 to 2°C. The predominant surface wind will likely be from the southwest direction with a wind speed of less than 05-10 kmph during the morning hours. The wind speed will gradually increase becoming 15-20 kmph from the northwest direction in the afternoon. It will decrease becoming less than 10 kmph from the west direction during the evening and night.

24.07.2025: Partly cloudy sky. Light rain. The maximum and minimum temperatures over Delhi are likely to be in the range of 32 to 34°C and 23 to 25°C respectively. The minimum temperature will be below normal up to 2 to 4°C and the maximum temperature will be below normal up to 1 to 2°C. The predominant surface wind will likely be from the west direction with a wind speed of less than 15 kmph during the morning hours. The wind speed will remain less than 15 kmph from the northwest direction in the afternoon. It will increase becoming less than 20 kmph from the west direction during the evening and night.

25.07.2025: Generally cloudy sky. Very light to light rain accompanied with thunderstorm/lightning. The maximum and minimum temperatures over Delhi are likely to be in the range of 34 to 36°C and 24 to 26°C respectively. The minimum temperature will be below normal up to 1 to 2°C and the maximum temperature will be above normal up to 1 to 2°C. The predominant surface wind will likely be from the west direction with a wind speed of less than 20 kmph during the morning hours. The wind speed will gradually decrease becoming less than 15 kmph from the west direction in the afternoon. It will increase becoming less than 20 kmph from the west direction during the evening and night.

Impact expected and Action Suggested due to light to moderate rainfall with thunderstorm/lightning:

- Be cautious and take precautionary measures, though there is the likelihood of thunderstorms/lightning.
- Damage to standing crops, Minor to major damage to power and communication lines due to breaking of branches, Partial damage to vulnerable structures due to strong winds, Loose objects may fly.
- People are advised to keep a watch on the weather for worsening conditions and be ready to move to safer places accordingly, stay indoors, close windows & doors and avoid travel if possible, take safe shelters; do not take shelter under trees, do not lie on concrete floors and do not lean against concrete walls, unplug electrical/ electronic appliances, immediately get out of water bodies, keep away from all the objects that conduct electricity.

Impact & Action Suggested

- ✓ **Extremely heavy falls** very likely at isolated places over Telangana today.
- ✓ **Very heavy rainfall** over Telangana on 23rd, Kerala during 25th-27th; Konkan & Goa, Ghat areas of Madhya Maharashtra during 22nd-28th; West Madhya Pradesh during 26th-28th; East Madhya Pradesh during 25th-28th; Vidarbha, Chhattisgarh during 22nd-26th; Jharkhand, Gangetic West Bengal & Odisha on 24th & 25th and Jammu-Kashmir on 22nd & 23rd July.

Impact Expected

- Localized Flooding of roads, water logging in low lying areas and closure of underpasses mainly in urban areas of **(Rajasthan and West Madhya Pradesh)** the above region.
- Occasional reduction in visibility due to heavy rainfall.
- Disruption of traffic in major cities due to water logging in roads leading to increased travel time.
- Minor damage to kutch roads.
- Possibilities of damage to vulnerable structure.
- Localized Landslides/Mudslides/landslips/mudslips/landsinks/mudsinks.
- Damage to horticulture and standing crops in some areas due to inundation.
- It may lead to riverine flooding in some river catchments (for riverine flooding please visit Web page of CWC)

Action Suggested

- Check for traffic congestion on your route before leaving for your destination.
- Follow any traffic advisories that are issued in this regard.
- Avoid going to areas that face the water logging problems often.
- Avoid staying in vulnerable structure.

Agromet advisories for likely impact of Heavy / Heavy to Very Heavy Rainfall

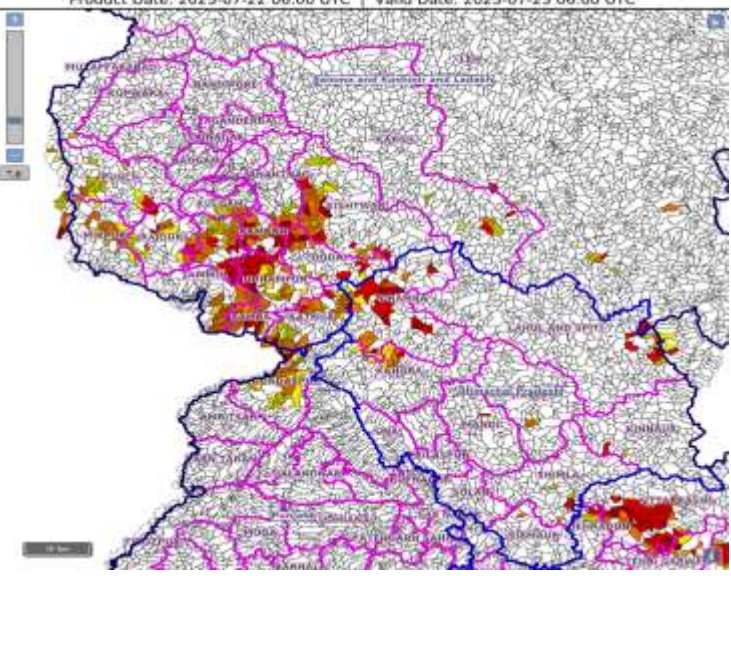
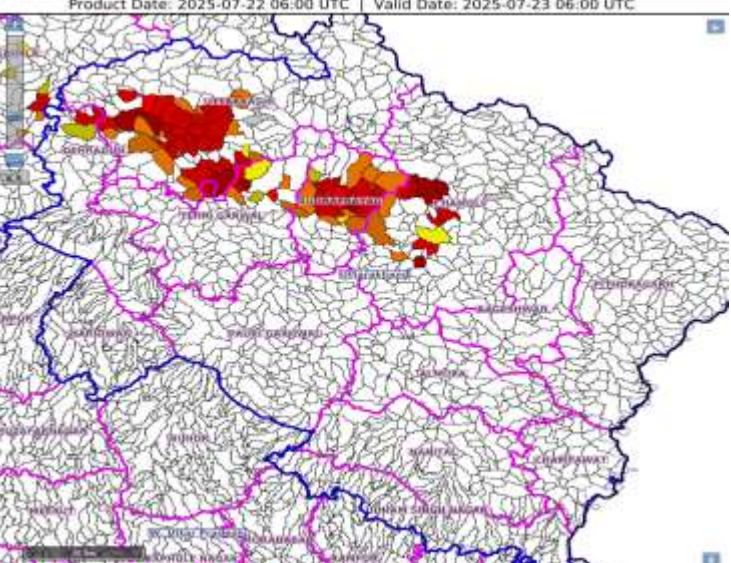
- In **Telangana**, ensure proper drainage facilities from the fields of paddy, maize, cotton, soybean and vegetables.
- In **Maharashtra**, provide adequate drainage facilities in fields of soybean, cotton, pigeon pea, sorghum, maize, green gram, black gram and turmeric in **Vidarbha**. Make arrangement to drain out excess water from paddy and finger millet nurseries, groundnut, vegetables and orchards in **Konkan** and rice and finger millet nurseries in **ghat areas** of **Madhya Maharashtra**.
- In **Jammu & Kashmir**, provide adequate drainage facilities in fields of maize, green gram, vegetables and transplanted rice in **Sub Tropical Zone** and maize fields and kharif pulses in **Intermediate Zone**.
- In **Uttarakhand**, maintain proper drainage channels in fields of rice in **Bhabar and Tarai Zone** and black gram in **Hill Zone**. Make necessary arrangements to drain out excess water from barnyard millet, finger millet, cucumber and rice fields in **Sub Humid SubTropic Zone**.
- In **Himachal Pradesh**, make proper drainage channels in the standing crops like maize, finger millet and vegetable fields. Provide staking to tall and leguminous crops and cucumber vines. In **Mid Hills Sub Humid Zone**, undertake harvesting of matured tomato, brinjal, capsicum and fruits and keep the harvested produce at safer places.
- In **Kerala**, provide mechanical support to protect banana plants. Ensure proper drainage facilities in banana, coconut and rice in **Central Zone**; banana, coconut, ginger and vegetable fields in **Southern Zone** and rice nursery in **High Altitude Zone**. In **Northern Zone**, postpone sowing / nursery preparation of rice.
- In **Karnataka**, postpone nursery sowing of rice and provide drainage in arecanut fields and banana orchards in **Coastal Zone**. In **Hill Zone**, make arrangements to drain out excess water from rice nurseries, fields of maize, cotton, ginger and plantations of arecanut. In **Southern Transition Zone**, provide proper drainage in arecanut and coconut fields. In **Southern Dry Zone**, provide staking / support to maize, tomato and banana crop. Ensure proper drainage to prevent waterlogging especially in rice, vegetables and spice crops.
- In **Coastal Andhra Pradesh**, ensure proper drainage channels in fields of maize and direct seeded rice in **Krishna Godavari Zone**.
- In **Chhattisgarh**, make arrangements for drainage of excess water from fields of rice, maize, pigeon pea, minor millets and vegetables. Provide mechanical support to tall/weak crops with stakes or bamboo to prevent lodging or breakage.
- In **Odisha**, drain out excess water from rice nurseries and fields of transplanted rice, maize, pulses, vegetable and plantation crops.
- In **Arunachal Pradesh**, maintain drainage in finger millet, orchards, vegetables and transplanted rice. Cover the nursery bed of millet with plastic sheet or shed, and cover the surface of already sown seed with light layer of natural mulches like leaves.

- In **Meghalaya**, maintain proper drainage channels around the nursery beds of rice. Ensure adequate drainage in maize, cow pea, okra, brinjal and pumpkin crop fields to prevent waterlogging. Provide support to banana plant to prevent lodging.

Livestock / Fishery

- Keep the animals inside the shed during heavy rainfall and provide them balanced feed.
- Store feed and fodder in a safe place to prevent spoilage.
- Construct an outlet with proper netting around the ponds to drain out excess water, thereby preventing fish from escaping in case of overflow.

Flash flood guidance:

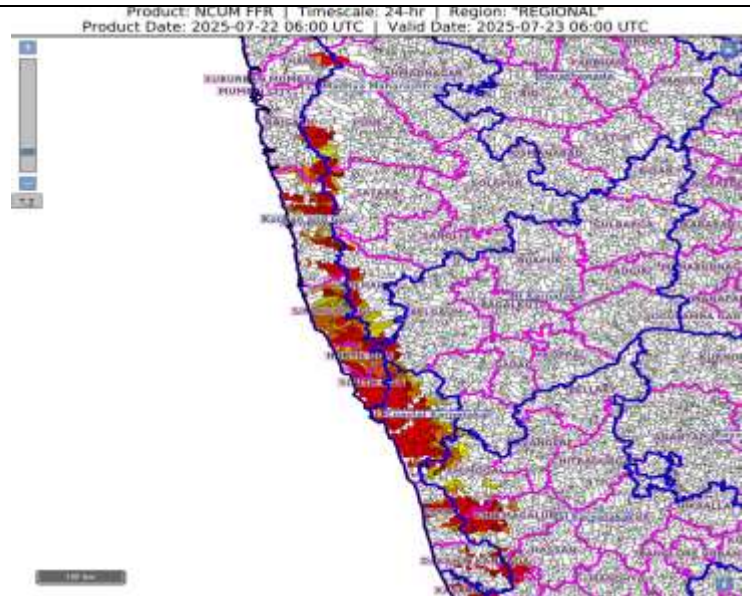
<p>24 hours Outlook for the Flash Flood Risk (FFR) till 1130 IST of 23-07-2025 :</p> <p>Low to Moderate flash flood risk likely over few watersheds & neighbourhoods of following Met Sub-divisions during next 24 hours.</p> <p>Himachal Pradesh - Chamba, Kangra, Kinnaur, Kullu, Lahul&Spiti, Mandi, Shimla and Sirmaur districts. Jammu & Kashmir & Ladakh - Anantnag, Doda, Jammu, Kathua, Kistwar, Kulgam, Punch, Rajouri, Ramban, Riasi, Samba, Udhampur, Kargil, Leh & Ladakh and Mirpur districts.</p> <p>Surface runoff/ Inundation may occur at some fully saturated soils & low-lying areas over Area of Concern (AoC) as shown in map due to expected rainfall occurrence in next 24 hours.</p>	
<p>24 hours Outlook for the Flash Flood Risk (FFR) till 1130 IST of 23-07-2025 :</p> <p>Low to Moderate flash flood risk likely over few watersheds & neighbourhoods of following Met Sub-divisions during next 24 hours.</p> <p>Uttarakhand - Chamoli, Dehradun, Rudraprayag, Tehri Garwal and Uttarkashi districts.</p> <p>Surface runoff/ Inundation may occur at some fully saturated soils & low-lying areas over Area of Concern (AoC) as shown in map due to expected rainfall occurrence in next 24 hours.</p>	

24 hours Outlook for the Flash Flood Risk (FFR) till 1130 IST of 23-07-2025 :

Low to Moderate flash flood risk likely over few watersheds & neighbourhoods of following Met Sub-divisions during next 24 hours.

Coastal Karnataka - Dakshin Kannada, Udupi and Uttar Kannada districts.
Adjoining South Interior Karnataka - Chikmagalur, Hassan, Kodagu and Shimoga districts.
Konkan & Goa - North Goa, South Goa, Raigarh, Ratnagiri, Sindhudurg and Thane districts.

Surface runoff/ Inundation may occur at some fully saturated soils & low-lying areas over Area of Concern (AoC) as shown in map due to expected rainfall occurrence in next 24 hours.



Legends & abbreviations:

- ❖ **Heavy Rain:**64.5-115.5mm; **Very Heavy Rain:**115.6-204.4mm; **Extremely Heavy Rain:** >204.4mm.
- ❖ **Obsy:** Observatory; Automatic Weather Station; **ARG:** Automatic Rain Gauge; **dist:** District; **NH:** National Highway; **KVK:** Krishi Vigyan Kendra; **DVC:** Damodar Valley Corporation; **PTO:** Part Time Office, **Aero:** Aerodrome, **IAF:** Indian Air Force.
- ❖ **Region wise classification of meteorological Sub-Divisions:**
 - **Northwest India:** Western Himalayan Region (Jammu-Kashmir-Ladakh-Gilgit-Baltistan-Muzaffarabad, Himachal Pradesh and Uttarakhand); Punjab, Haryana-Chandigarh-Delhi; West Uttar Pradesh, East Uttar Pradesh, West Rajasthan and East Rajasthan.
 - **Central India:** West Madhya Pradesh, East Madhya Pradesh, Vidarbha and Chhattisgarh.
 - **East India:** Bihar, Jharkhand, Sub-Himalayan West Bengal & Sikkim; Gangetic West Bengal, Odisha and Andaman & Nicobar Islands.
 - **Northeast India:** Arunachal Pradesh, Assam & Meghalaya and Nagaland, Manipur, Mizoram & Tripura.
 - **West India:** Gujarat Region, Saurashtra & Kutch, Konkan & Goa, Madhya Maharashtra and Marathawada.
 - **South India:** Coastal Andhra Pradesh & Yanam, Telangana, Rayalaseema, Coastal Karnataka, North Interior Karnataka, South Interior Karnataka, Kerala & Mahe, Tamil Nadu, Puducherry & Karaikal and Lakshadweep.

LEGENDS

1. अंडमान और निकोबार द्वीपसमूह

2. अरुणाचल प्रदेश

3. असम और मेघालय

4. नागालैंड, मणिपुर, मिजोरम और त्रिपुरा

5. उप-हिमालयी पश्चिम बंगाल और सिक्किम

6. गंगीय पश्चिम बंगाल

7. ओडिशा

8. झारखंड

9. बिहार

10. पूर्वी उत्तर प्रदेश

11. पश्चिम उत्तर प्रदेश

12. उत्तराखंड

13. हरियाणा, चंडीगढ़ और दिल्ली

14. पंजाब

15. हिमाचल प्रदेश

16. जम्मू और कश्मीर और लद्दाख

17. पश्चिम राजस्थान

18. पूर्वी राजस्थान

19. पश्चिम मध्य प्रदेश

20. पूर्वी मध्य प्रदेश

21. गुजरात

22. सौराष्ट्र

23. कोंकण और गोवा

24. मध्य महाराष्ट्र

25. मराठवाड़ा

26. विदर्भ

27. छत्तीसगढ़

28. तटीय आंध्र प्रदेश और यनम

29. तेलंगाना

30. रायलसीमा

31. तमिलनाडु, पुडुचेरी और कराईकल

32. तटीय कर्नाटक

33. आंतरिक उत्तरी कर्नाटक

34. आंतरिक दक्षिणी कर्नाटक

35. केरल और माहे

36. लक्षद्वीप



1. Andaman & Nicobar Islands

2. Arunachal Pradesh

3. Assam & Meghalaya

4. Nagaland, Manipur, Mizoram & Tripura

5. Sub-Himalayan West Bengal & Sikkim

6. Gangetic West Bengal

7. Odisha

8. Jharkhand

9. Bihar

10. East Uttar Pradesh

11. West Uttar Pradesh

12. Uttarakhand

13. Haryana, Chandigarh & Delhi

14. Punjab

15. Himachal Pradesh

16. Jammu & Kashmir and Ladakh

17. West Rajasthan

18. East Rajasthan

19. West Madhya Pradesh

20. East Madhya Pradesh

21. Gujarat

22. Saurashtra

23. Konkan & Goa

24. Madhya Maharashtra

25. Marathwada

26. Vidarbha

27. Chhattisgarh

28. Coastal Andhra Pradesh & Yanam

29. Telangana

30. Rayalaseema

31. Tamilnadu, Puducherry & Karaikal

32. Coastal Karnataka

33. North Interior Karnataka

34. South Interior Karnataka

35. Kerala & Mahe

36. Lakshadweep

SPATIAL DISTRIBUTION (% of Stations reporting)

% Stations	Category	% Stations	Category
76-100	Widespread (WS/Most Places)	26-50	Scattered (SCT/A Few Places)
51-75	Fairly Widespread (FWS/Many Places)	1-25	Isolated (ISOL)



Fog



Heavy Snow



Cold Wave



Heavy Rain



Dust Storm



Cold Day



Very Heavy Rain



Heat Wave



Ground Frost



Extremely Heavy Rain



Warm Night



Thunder & Lightning



Hot Day



Hailstorm



Hot & Humid



Dust Raising Winds



Strong Surface Winds

COLOUR CODED WARNING

No Warning (No Action)

Watch (Be Aware)

Alert (Be Prepared To Take Action)

Warning (Take Action)

Probabilistic Forecast

Terms	Probability of Occurrence (%)
Unlikely	< 25
Likely	25 - 50
Very Likely	50 - 75
Most Likely	> 75

* Red colour warning does not mean "Red Alert", Red colour warning means "Take Action".

Forecast and Warning for any day is valid from 0830 hours IST of day till 0830 hours IST of next day.

For more details, kindly visit <https://mausam.imd.gov.in> or contact: 011-2434-4599

(Service to the Nation since 1875)

DEFINITION/CRITERIA

Rain/ Snow *

Heavy: 64.5 to 115.5 mm/cm *
Very Heavy: 115.6 to 204.4 mm/cm *
Extremely Heavy: > 204.4 mm/cm *

Heat Wave

When maximum temperature of a station reaches $\geq 40^{\circ}\text{C}$ for plains and $\geq 30^{\circ}\text{C}$ for hilly regions

(a) Based on Departure from normal

Heat Wave: Maximum Temperature Departure from normal 4.5°C to 6.4°C .

Severe Heat Wave: Maximum Temperature Departure from normal $\geq 6.5^{\circ}\text{C}$

(b). Based on Actual maximum temperature

Heat Wave: When actual maximum temperature $\geq 45^{\circ}\text{C}$.

Severe Heat Wave: When actual maximum temperature $\geq 47^{\circ}\text{C}$.

(c). Criteria for heat wave for coastal stations

When maximum temperature departure is $> 4.5^{\circ}\text{C}$ from normal. Heat Wave may be described provided maximum temperature $\geq 37^{\circ}\text{C}$.

Warm Night

When maximum temperature remains 40°C

Warm Night: When minimum temperature departure 4.5°C to 6.4°C .

Severe Warm Night: When minimum temperature departure $> 6.4^{\circ}\text{C}$.

Cold Wave

When minimum temperature of a station $\leq 10^{\circ}\text{C}$ for plains and $\leq 0^{\circ}\text{C}$ for hilly regions.

(a). Based on departure

Cold Wave: Minimum Temperature Departure from normal -4.5°C to -6.4°C .

Severe Cold Wave: Minimum Temperature Departure from normal $\leq -6.5^{\circ}\text{C}$

(b) Based on actual Minimum Temperature (for Plains only)

Cold Wave: When Minimum Temperature is $\leq 4.0^{\circ}\text{C}$

Severe Cold Wave: When Minimum Temperature is $\leq 2.0^{\circ}\text{C}$

(c) For Coastal Stations

When Minimum Temperature departure is $\leq -4.5^{\circ}\text{C}$ & actual Minimum Temperature is $\leq 15^{\circ}\text{C}$

Cold Day

When minimum temperature of a station $\leq 10^{\circ}\text{C}$ for plains and $\leq 0^{\circ}\text{C}$ for hilly regions

Based on departure

Cold Day: Maximum Temperature Departure from normal -4.5°C to -6.4°C .

Severe Cold Day: Maximum Temperature Departure from normal $\leq -6.5^{\circ}\text{C}$

Fog

Phenomenon of small droplets suspended in air and the horizontal visibility $< 1\text{km}$

Moderate Fog: When the visibility between 500-200 metres

Dense Fog: when the visibility between 50- 200 metres

Very Dense Fog: when the visibility < 50 metres

Thunderstorm

Sudden electrical discharges manifested by a flash of light (Lightning) and a sharp rumbling sound (thunder)

Dust/Sand Storm

An ensemble of particles of dust or sand energetically lifted to great heights by a strong and turbulent wind.

Frost

Ice deposits on ground

Air temperature $\leq 4^{\circ}\text{C}$ (over Plains)

Squall

A strong wind that rises suddenly, lasts for atleast 1 minute.

Moderate: Wind speed 52-61 kmph

Severe: Wind speed 62-67 kmph

Very Severe: Wind speed > 67 kmph

Sea State

Effect of various waves in the sea over specific area

Rough to very rough: Wind speed 41-62 kmph (22-33 knots) & Wave height 2.5-6 metre

High to very high: Wind speed 63-117 kmph (34-63 knots) & Wave height 6-14 metre

Phenomenal: Wind speed > 117 kmph (> 63 knots) & Wave height > 14 metre

Cyclone

Cyclonic Storm: Wind speed 62-87 kmph (34-47 knots)

Severe Cyclonic Storm: Wind speed 88-117 kmph (48-63 knots)

Very Severe Cyclonic Storm: Wind speed 118-165 kmph (64 - 89 knots)

Extremely Severe Cyclonic Storm: Wind speed 166-220 kmph (90 -119 knots)

Super Cyclone Storm: Wind speed > 220 kmph (> 119 knots)

* Red colour warning does not mean "Red Alert", Red colour warning means "Take Action".

Forecast and Warning for any day is valid from 0830 hours IST of day till 0830 hours IST of next day.

For more details, kindly visit <https://mausam.imd.gov.in> or contact: 011-2434-4599

(Service to the Nation since 1875)

Hot and Humid: When maximum temperatures remain 3°C above normal along with the above normal relative humidity.